

VIEW SHOWING OPERATION OF ROIL CONNECTOR WITH CABLE ASSY. REMOVED

NOTES

1. TORCH CONSTRUCTION IN SEVERAL SECTIONS
IF THE TORCH IS OVER 3 M LONG, IT WILL BE SHIPPED IN SECTIONS FOR ASSEMBLY ON SITE. RESEMBLE THE CONDUCTOR ROD SECTIONS FROM THE MANTURE TUBES, INCLUDING THE REAR SECTION (SPACER) TO THE IGNITION COIL.
SOCKET THE MANTURE TUBE SECTIONS TOGETHER AND MAKE A LIGHT WELD TO HOLD THE SECTIONS TOGETHER. IT IS IMPORTANT THAT THE WELD DOES NOT INTERFERE WITH THE INTERNAL BORE OF THE TUBE THROUGH EITHER DISTORTION OR WELD OVERLAP. THIS WOULD REDUCE THE CENTRAL INSULATION AND CAUSE SPARKS TO FORM. ALWAYS SMOOTHLY INSIDE THE TUBE CLEAN UP THE WELD BACK TO THE TORCH ORIGINAL DIAMETER.
REINDE THE BURNER HEAD (ITEM 1) FROM THE FRONT OF THE TUBE ASSEMBLY.
REINDE THE FRONT SECTION OF CONDUCTOR ROD (WITH THE 5/8" ELECTRODE) INTO THE MANTURE TUBE FROM THE COIL HOUSING END (WITH THE ELECTRODE TO THE FRONT).
WHEN IT IS ALMOST INSERTED, CONNECT THE SECOND LENGTH OF ROD, SECURING THE CONNECTION TIGHT AND PROTECTING THE JOINT WITH A PEECE OF HEAT SHRINK SLEEVE OVER THE JOINT, OVERLAPPING THE REAR AND FRONT TUBE. THE COMPLETE CONDUCTOR ROD HAS BEEN INSERTED AND THE COIL HOUSING HAS BEEN ASSEMBLED AND THE SECURING SCREWS ARE TIGHTENED.
THE WIDE END OF THE TAPER POINTS DOWN - THIS WILL ENSURE THAT THE CABLE CAN HANG DOWNWARD.

3. CONDUCTOR ROD ASSY PART NUMBER DEPENDS UPON ROD & SPACER ASSEMBLY MATERIALS, I.E.

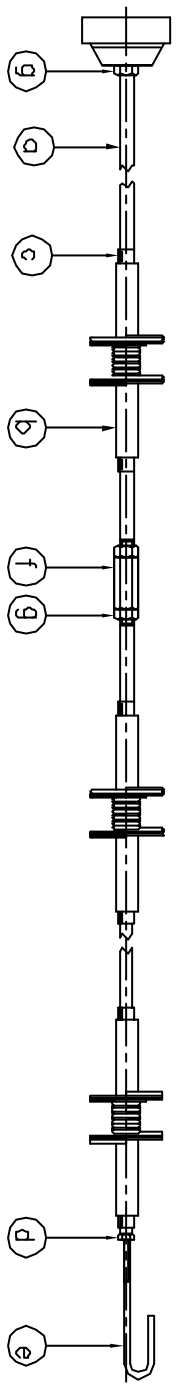
ROD	SPACERS	ASSY P/N
MS	MCA	30 1143 00
MS	CERAMIC	2130
303 SS	MCA	30 1144 00
303 SS	CERAMIC	2136

4. MANTURE TUBE MATERIAL

MS TUBE	P/N 2033
304 SS TUBE <td>P/N 2034</td>	P/N 2034
310 SS TUBE <td>P/N 1028</td>	P/N 1028

2. CONDUCTOR ROD ASSY (ITEM 2) COMPRISES:
 - a) CONDUCTOR ROD P/N 30 1124 00 FOR MS OR 30 1126 00 FOR 303 SS
 - b) MCA SPACER ASSEMBLY (C/M SPRING) P/N 95 7447 00
 - c) CERAMIC SPACER ASSY (C/M SPRING) P/N 30 1101 00 - QTY TO SUIT TORCH LENGTH
 - d) SPACER RETAINING CLIP P/N 30 1107 00 - 2 PER SPACER ASSY
 - e) LOCKWUT MS P/N 1128
 - f) SPARK-FLAME ELECTRODE P/N 95 3443 00
 - g) MS REMOTE COILDER P/N 1130
 - h) LOCKWUT MS P/N 30 1127 00

CONDUCTOR ROD ASSY - SEE NOTE 2



REV.	DATE	DESCRIPTION	BY	CHKD
B	20.5.05	DCR 1300		
A	20.11.03	M3 WASHER REMOVED		
-	13-4-91	FIRST ISSUE		

SCALE 1:1 PART NO. CA304 MATERIAL AS STATED
 CLIENT: **IGNITERS COMBUSTION ENGINEERING LTD.**
 UNIT 5 PROSPECT DRIVE, CONTEMPORARY INDUSTRIAL ESTATE, LUTHERIA,
 STAFFORDSHIRE, NG14 6UL, UK
 TELEPHONE +44 (0)1443 253470
 FAX +44 (0)1443 257450
 EMAIL info@igniters.com
 COPYRIGHT © 2011
 ALL RIGHTS RESERVED
 THIS DRAWING IS THE PROPERTY OF I&C AND MUST NOT BE COPIED OR
 REPRODUCED WITHOUT PERMISSION.