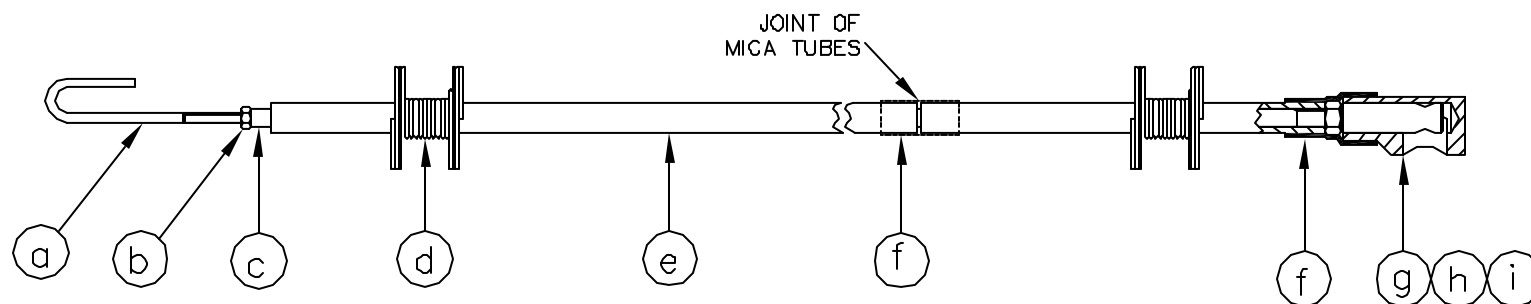


PARTS LIST				
ITEM	DESCRIPTION	PART NO	MATL	QTY
1	MIXTURE TUBE	2033	MS	1
2	CROSS	67 6102 00	MI	1
3	BUSH 1 1/4" X 3/4"	30 112200	BRASS	1
4	ADAPTOR	1778	MS	1
5	LEAD THRD ASSEMBLY	1816	VARIOUS	1
6	CONDUCTOR ROD ASSEMBLY	1804	VARIOUS	1
7	GLAND NUT	1808	MS	1
8	BURNER HEAD	1047	304 S/S	1
9	PLUG	67 6105 00	MI	1
10	EXTENSION TUBE	30 1135 00	MS	1
11	INJECTOR BODY	1138	MS	1
12	VENTURI	1189	St St	1
13	JET	1245	St St	1
14	HEX SETSCREW	1213	St St	1
15	COLLAR	63 2442 00	MS	1
16	MOUNTING NUT	60 1441 00	BRASS	1
17	HEX SETSCREW	1288	St St	3
18				
19	ENCAPSULATED COIL, SA90	1920	VARIOUS	1
20	BUSH 1 1/4" X 1"	1200	BRASS	1

NOTES

1. SEAL PRESSURISED JOINTS WITH SUITABLE THREAD SEALANT.
2. ELECTRODE MATERIAL - KANTHAL A1
3. HAZARDOUS AREA CERTIFICATE. ENCAPSULATED COIL SIRA 02ATEX5301X.
4. STAINLESS STEEL TORCH OPTION:
ITEM 1 MIXTURE TUBE IN 304 SS P/N 2034
ITEM 6 CON ROD ASSY WITH 303 SS ROD P/N 2059
5. CONDUCTOR ROD ASSEMBLY COMPRISES:
 - a) SPARK-FLAME ELECTRODE P/N 1060
 - b) LOCKNUT M3 P/N 1129
 - c) MS CONDUCTOR ROD P/N 30 1124 00 OR SS ROD P/N 30 1125 00
 - d) SPRING P/N 1068 - X PIECES
 - e) MICA INSULATION TUBE (1200 LONG) P/N 1435 - X PIECES
 - f) HEAT SHRINK SLEEVE Ø9 X 20 LONG P/N 1680 - X PIECES
 - g) CON ROD END INSERT P/N 1399
 - h) CON ROD END SHROUD P/N 1398
 - i) LOCKNUT M5 P/N 30 1127 00



THE CABLE IS ENCAPSULATED INTO THE COIL AND CANNOT BE REMOVED.
CABLE TYPE:
CABLE LENGTH:

COPYRIGHT © 2003.
ALL RIGHTS RESERVED.
THIS DRAWING IS THE PROPERTY OF ICEL AND MUST NOT BE COPIED OR REPRODUCED WITHOUT PERMISSION.

IGNITERS COMBUSTION ENGINEERING LTD.
 UNIT 6 PROSPECT DRIVE, ENTERPRISE INDUSTRIAL ESTATE, LICHFIELD,
 STAFFORDSHIRE, WS14 9UX, UK
 TELEPHONE +44 (0)1543 251478
 FAX +44 (0)1543 257850
 EMAIL edles@igniters.co.uk

SCALE: 1:1	PART NO: CA334	MATL: -
CONTRACT: -		
CLIENT: -		
END USER: -		
TITLE: J170E TORCH WITH GAS INJECTOR		
		A1/IG/9742B

REV.	DATE	DESCRIPTION	BY	CH'D
B	27/9/05	DCR 1483	RWE	CC
A	5/3/04	DCR 725	RWE	CC
-	28/11/03	FIRST ISSUE. DCR 645	RWE	CC