

NOTES

1. TORCH CONSTRUCTION IN SEVERAL SECTIONS

IF THE TORCH IS OVER 3 M LONG, IT WILL BE SHIPPED IN SECTIONS FOR ASSEMBLY ON SITE. REMOVE THE CONDUCTOR ROD SECTIONS FROM THE MIXTURE TUBES, INCLUDING THE REAR SECTION SCREWED TO THE IGNITION COIL. SOCKET THE MIXTURE TUBE SECTIONS TOGETHER AND MAKE A LIGHT WELD TO HOLD THE SECTIONS TOGETHER. IT IS IMPORTANT THAT THE WELD DOES NOT INTERFERE WITH THE INTERNAL BORE OF THE TUBE THROUGH EITHER DISTORTION OR WELD DROPS. THIS WOULD PREVENT THE CENTRAL INSULATORS ON THE CONDUCTOR ROD FROM SLIDING SMOOTHLY INSIDE THE TUBE. CLEAN UP THE WELD BACK TO THE TORCH ORIGINAL DIAMETER. REMOVE THE BURNER HEAD (ITEM 7) FROM THE FRONT OF THE TUBE ASSEMBLY. INSERT THE FRONT SECTION OF CONDUCTOR ROD (WITH THE S/F ELECTRODE) INTO THE MIXTURE TUBE FROM THE COIL HOUSING END (WITH THE ELECTRODE TO THE FRONT). WHEN IT IS ALMOST INSERTED, CONNECT THE SECOND LENGTH OF ROD, SECURING THE CONNECTION TIGHT AND PROTECTING THE JOINT WITH A PIECE OF HEAT SHRINK SLEEVE OVER THE JOINT, OVERLAPPING THE MICA INSULATION TUBE. REPEAT THIS UNTIL THE COMPLETE CONDUCTOR ROD HAS BEEN INSERTED AND THE COIL HOUSING HAS BEEN ASSEMBLED AND THE SECURING SCREWS ARE TIGHTENED. THE IGNITION COIL HAS A RAISED BLACK PLASTIC PART IN THE CENTRE OF THE PLUG. MAKE SURE THAT THE WIDE END OF THE TAPER POINTS DOWN - THIS WILL ENSURE THAT THE CABLE CAN HANG DOWNWARDS.

2. CONDUCTOR ROD ASSY (ITEM 5) COMPRISES:

- a) CONDUCTOR ROD P/N 30 1124 00 FOR MS OR 30 1125 00 FOR 303 SS
- b) MICA SPACER ASSEMBLY (C/W SPRING) P/N 65 7447 00 OR CERAMIC SPACER ASSY (C/W SPRING) P/N 30 1101 00 - QTY TO SUIT TORCH LENGTH
- c) SPACER RETAINING CLIP P/N 30 1107 00 - 2 PER SPACER ASSY
- d) LOCKNUT M3 P/N 1129
- e) SPARK-FLAME ELECTRODE P/N 65 3443 00
- f) M5 FEMALE COUPLER P/N 1130
- g) LOCKNUT M5 P/N 30 1127 00

3. CONDUCTOR ROD ASSY PART NUMBER DEPENDS UPON ROD & SPACER ASSY MATERIALS, I.E.

ROD	SPACERS	ASSY P/N
MS	MICA	30 1143 00
MS	CERAMIC	2135
303 SS	MICA	30 1144 00
303 SS	CERAMIC	2136

4. MIXTURE TUBE MATERIAL

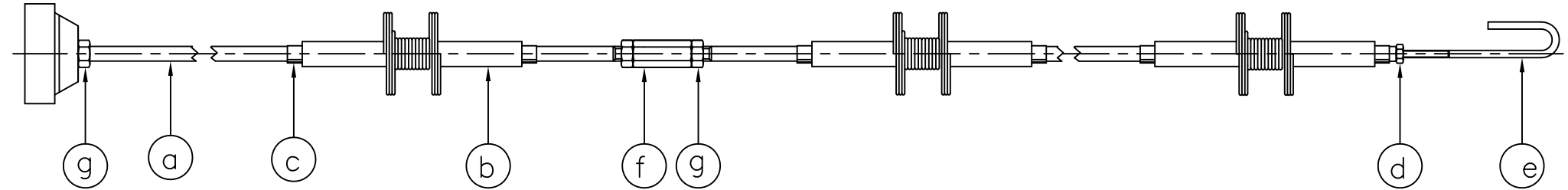
MS TUBE P/N 2033
 304 SS TUBE P/N 2034
 310 SS TUBE P/N 1029

5. BURNER HEAD (ITEM 6) OPTION:

MATERIAL IN 310 SS P/N 65 3445 00

PARTS LIST				
ITEM	DESCRIPTION	PART NO	MATL	QTY
1	MIXTURE TUBE	SEE NOTE 4	SEE NOTE 4	1
2	COIL HOUSING & END CAP	63 1001/2 00	BRONZE	1
3	HTM IGNITION COIL	67 7001 00	VARIOUS	1
4	CONDUCTOR ROD ASSEMBLY	SEE NOTE 3	VARIOUS	1
5	SEALING GASKET	64 6001 00	PTFE	1
6	J170 BURNER HEAD	65 3441 00	304 SS	1
7	HOSE CONNECTOR 1/2" BSP	60 2001 00	MILD STEEL	1
8	MOUNTING NUT	60 1441 00	BRASS	1
9	MOUNTING COLLAR	63 2442 00	MILD STEEL	1
10	HEX SETSCREW	1288	304 SS	1

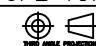
CONDUCTOR ROD ASSY - SEE NOTE 2



COPYRIGHT © 1991.
 ALL RIGHTS RESERVED
 THIS DRAWING IS THE PROPERTY OF ICEL AND MUST NOT BE COPIED OR REPRODUCED WITHOUT PERMISSION.
 IGNITERS COMBUSTION ENGINEERING LTD.
 UNIT 6 PROSPECT DRIVE, ENTERPRISE INDUSTRIAL ESTATE, LICHFIELD,
 STAFFORDSHIRE, WS14 9UX, UK
 TELEPHONE +44 (0)1543 251478
 FAX +44 (0)1543 257850
 EMAIL sales@igniters.co.uk

SCALE: 1:1 PART NO: CA304 MATL: AS STATED
 CONTRACT:
 CLIENT:

REV.	DATE	DESCRIPTION	BY	CH'D
B	20.5.05	DCR 1309	RWE	CC
A	29.11.93	M5 WASHER REMOVED	RWE	
-	15-4-91	FIRST ISSUE.	RWE	

END USER:
 TITLE: J170PE TORCH IGNITER
 A1/IG/ 7812B