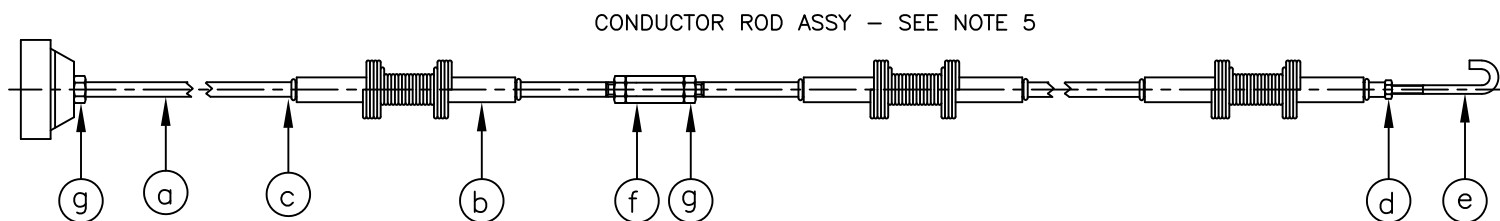


**NOTES**

1. SEAL PRESSURISED JOINTS WITH SUITABLE PIPE SEALANT.
2. APPLY ANTI-SEIZE GREASE TO THREADED JOINTS BETWEEN 1 AND 2, AND 15 AND 17.
3. MIXTURE TUBE  
MILD STEEL P/N 30 1120 00  
304 STAINLESS STEEL P/N 68 2343 00
4. NUMBER OF SPACERS DEPENDANT ON LENGTH OF TORCH. SPACED AT APPROX 0.5m APART.
5. CONDUCTOR ROD ASSY (ITEM 5) COMPRISES:
  - a) MILD STEEL CONDUCTOR ROD P/N 30 1124 00 OR 303 SS P/N 30 1125 00
  - b) MICA SPACER ASSEMBLY (C/W SPRING) P/N 65 7447 00 OR CERAMIC SPACERS P/N 30 1100 00
  - c) SPACER RETAINING RING P/N 61 3001 00 - 2 PER SPACER ASSY
  - d) LOCKNUT M3 P/N 1129
  - e) SPARK-FLAME ELECTRODE P/N 65 3343 00
  - f) M5 FEMALE COUPLER P/N 1130
  - g) LOCKNUT M5 P/N 30 1127 00

MILD STEEL CONDUCTOR ROD ASSEMBLY P/N 30 1130 00  
STAINLESS STEEL CONDUCTOR ROD ASSEMBLY P/N 67 7341 00



| PARTS LIST |                        |            |           |     |
|------------|------------------------|------------|-----------|-----|
| ITEM       | DESCRIPTION            | PART NO    | MATL      | QTY |
| 1          | BURNER HEAD            | 65 3341 00 | 304 ST ST | 1   |
| 2          | MIXTURE TUBE           | NOTE 3     | NOTE 3    | 1   |
| 3          | COIL HOUSING           | 63 1001 00 | BRASS     | 1   |
| 4          | END CAP                | 63 1002 00 | BRASS     | 1   |
| 5          | IGNITION COIL          | 67 7001 00 | VARIOUS   | 1   |
| 6          | HOSE ADAPTOR           | 60 2001 00 | MS        | 1   |
| 7          | CONDUCTOR ROD ASSEMBLY | SEE NOTES  |           | 1   |
| 8          | SOCKET HEAD SETSCREW   | 61 2002 00 | CS        | 2   |
| 9          | HEX SETSCREW           | 1213       | A2 ST ST  | 3   |
| 10         | BUSH                   | 60 1342 00 | BRASS     | 1   |
| 11         | CAPNUT                 | 60 1341 00 | BRASS     | 1   |
| 12         | GASKET                 | 64 6001 00 | NITRILE   | 1   |
| 13         | COLLAR                 | 63 2342 00 | MS        | 1   |

COMPLETE TORCH

WITH MS TUBE P/N 30 1137 00

WITH SS TUBE P/N 30 1138 00

COPYRIGHT © 1991.  
ALL RIGHTS RESERVED  
THIS DRAWING IS THE PROPERTY OF ICEL AND MUST NOT BE COPIED OR REPRODUCED WITHOUT PERMISSION.

IGNITERS COMBUSTION ENGINEERING LTD.  
UNIT 6 PROSPECT DRIVE, ENTERPRISE INDUSTRIAL ESTATE, LICHFIELD,  
STAFFORDSHIRE, WS14 9UX, UK  
TELEPHONE +44 (0)1543 251478  
FAX +44 (0)1543 257850  
EMAIL sales@igniters.co.uk

SCALE: 1:1 PART NO: CA300 MATL: AS STATED

CONTRACT:

CLIENT:

END USER:

TITLE: J120PE TORCH

| REV. | DATE    | DESCRIPTION                     | BY  | CH'D |
|------|---------|---------------------------------|-----|------|
| B    | 26/4/12 | CON ROD ASSY DETAILED. DCR 3811 | RWE | MH   |
| A    | 1/7/05  | REDRAWN ON CAD. DCR 1357        | CC  | RE   |
| -    | 8/8/91  | FIRST ISSUE                     | RE  | -    |



A1/IG/ 7844B