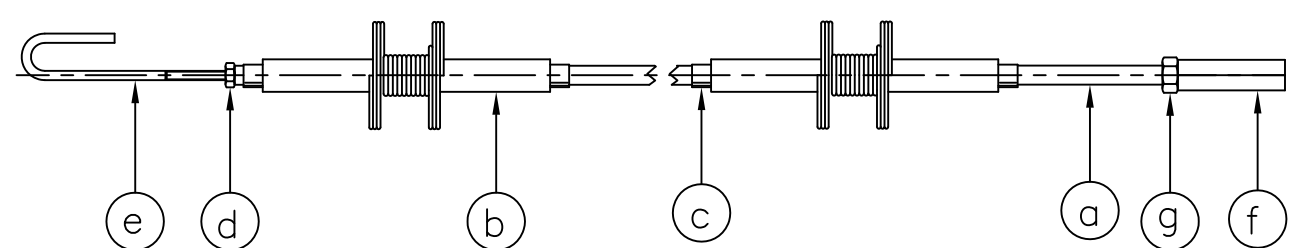


PARTS LIST				
ITEM	DESCRIPTION	PART NO	MATL	QTY
1	MIXTURE TUBE	30 1134 00	MS	1
2	CROSS 1" BSP	30 1157 00	MI	1
3	BUSH	INC IN 2	BRASS	1
4	ADAPTOR	1778	MS	1
5	LEAD THRO' ASSEMBLY	1918	VARIOUS	1
6	CONDUCTOR ROD ASSEMBLY	1083	VARIOUS	1
7	GLAND NUT	1808	MS	1
8	BURNER HEAD	65 3441 00	304 S/S	1
9	ELBOW	INC. IN 15	MI	1
10	HOSE ADAPTOR 1/2" BSP	60 2005 00	MS	1
11	COLLAR	63 2442 00	MS	1
12	MOUNTING NUT	60 1441 00	BRASS	1
13	HEX SETSCREW	1288	St St	3
14	ENCAPSULATED COIL, SA90	1920	VARIOUS	1
15	BARREL NIPPLE 1"	1007	MS	1
16	PLUG	30 1107 00	MI	1

NOTES

1. SEAL PRESURISED JOINTS WITH SUITABLE THREAD SEALANT.
2. ELECTRODE MATERIAL - KANTHAL A1
3. HAZARDOUS AREA CERTIFICATE.
ENCAPSULATED COIL: SIRA 02ATEX5301X.
4. CONDUCTOR ROD ASSY (ITEM 6) COMPRISES:
 - a) CONDUCTOR ROD P/N 30 1124 00 FOR MS OR 30 1125 00 FOR 303 SS
 - b) MICA SPACER ASSEMBLY (C/W SPRING) P/N 65 7447 00
OR CERAMIC SPACER ASSY (C/W SPRING) P/N 30 1101 00 - QTY TO SUIT TORCH LENGTH
 - c) SPACER RETAINING CLIP P/N 30 1107 00 - 2 PER SPACER ASSY
 - d) LOCKNUT M3 P/N 1129
 - e) SPARK-FLAME ELECTRODE P/N 65 3443 00
 - f) CONDUCTOR ROD END CONNECTOR P/N 64 1001 00
 - g) LOCKNUT M5 P/N 30 1127 00

CONDUCTOR ROD ASSY - SEE NOTE 4



THE CABLE IS ENCAPSULATED INTO THE COIL AND CANNOT BE REMOVED.
CABLE TYPE:
CABLE LENGTH:

COPYRIGHT © 2003.
ALL RIGHTS RESERVED
THIS DRAWING IS THE PROPERTY OF ICEL AND MUST NOT BE COPIED OR REPRODUCED WITHOUT PERMISSION.

IGNITERS COMBUSTION ENGINEERING LTD.
UNIT 6 PROSPECT DRIVE, ENTERPRISE INDUSTRIAL ESTATE, LICHFIELD,
STAFFORDSHIRE, WS14 9UX, UK
TELEPHONE +44 (0)1543 251478
FAX +44 (0)1543 257850
EMAIL sales@igniters.co.uk

SCALE: 1:1	PART NO: CA333	MATL: AS STATED
CONTRACT:		
CLIENT:		
END USER:		
TITLE: J170E TORCH		

-	28/11/03	FIRST ISSUE. DCR 643	RWE	CC
REV.	DATE	DESCRIPTION	BY	CH'D

A1/IG/ 9678