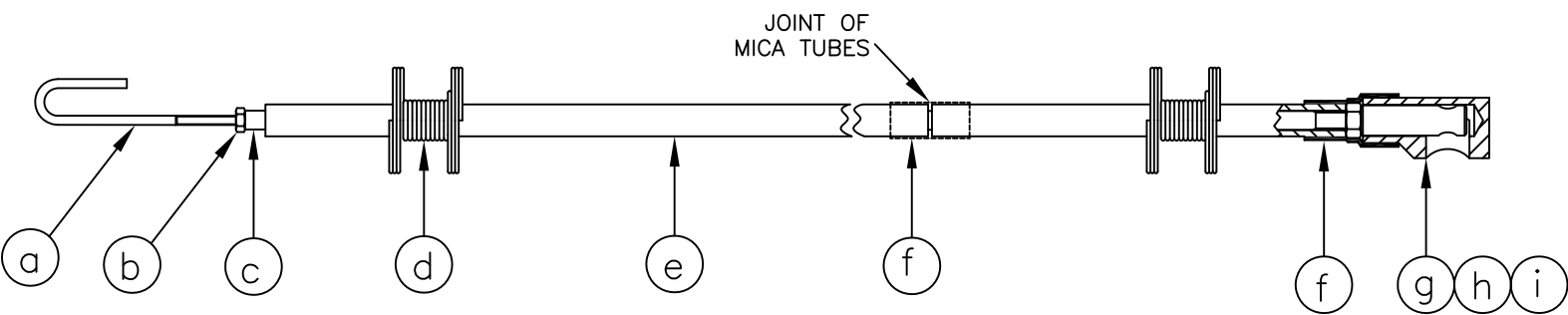


PARTS LIST				
ITEM	DESCRIPTION	PART NO	MATL	QTY
1	MIXTURE TUBE	2033	MS	1
2	TEE	2202	316 SS	1
3	BUSH 1 1/4" X 3/4"	30 112200	BRASS	1
4	ADAPTOR	1778	MS	1
5	LEAD THRO' ASSEMBLY	1816	VARIOUS	1
6	CONDUCTOR ROD ASSEMBLY	2739	VARIOUS	1
7	GLAND NUT	1808	MS	1
8	BURNER HEAD	1047	304 S/S	1
9				
10	EXTENSION TUBE	30 1155 00	MS	1
11	INJECTOR BODY	1138	MS	1
12	VENTURI	1169	St St	1
13	JET	1245	St St	1
14	HEX SETSCREW	1213	St St	1
15	COLLAR	63 2442 00	MS	1
16	MOUNTING NUT	60 1441 00	BRASS	1
17	HEX SETSCREW	1288	St St	3
18				
19	ENCAPSULATED COIL, SA90	1920	VARIOUS	1
20	BUSH 1 1/4" X 1"	1200	BRASS	1

**NOTES**

1. SEAL PRESSURISED JOINTS WITH SUITABLE THREAD SEALANT.
2. ELECTRODE MATERIAL – KANTHAL A1
3. HAZARDOUS AREA CERTIFICATE.  
ENCAPSULATED COIL SIR A 02ATEX5301X.
4. STAINLESS STEEL TORCH OPTION:  
ITEM 1 MIXTURE TUBE IN 304 SS P/N 2034  
ITEM 6 CON ROD ASSY WITH 303 SS ROD P/N 2059
5. CONDUCTOR ROD ASSEMBLY COMPRISES:
  - a) SPARK-FLAME ELECTRODE P/N 1060
  - b) LOCKNUT M3 P/N 1129
  - c) MS CONDUCTOR ROD P/N 30 1124 00 OR SS ROD P/N 30 1125 00
  - d) SPRING P/N 1068 – X PIECES
  - e) MICA INSULATION TUBE (1200 LONG) P/N 1435 – X PIECES
  - f) HEAT SHRINK SLEEVE Ø9 X 20 LONG P/N 1680 – X PIECES
  - g) CON ROD END INSERT P/N 1399
  - h) CON ROD END SHROUD P/N 1398
  - i) LOCKNUT M5 P/N 30 1127 00



THE CABLE IS ENCAPSULATED INTO THE COIL AND CANNOT BE REMOVED.  
CABLE TYPE:  
CABLE LENGTH:

COPYRIGHT © 2003.  
ALL RIGHTS RESERVED.  
THIS DRAWING IS THE PROPERTY OF ICEL AND MUST NOT BE COPIED OR REPRODUCED WITHOUT PERMISSION.

**IGNITERS COMBUSTION ENGINEERING LTD.**  
UNIT 6 PROSPECT DRIVE, ENTERPRISE INDUSTRIAL ESTATE, LICHFIELD,  
STAFFORDSHIRE, WS14 9UX, UK  
TELEPHONE +44 (0)1543 251478  
FAX +44 (0)1543 257850  
EMAIL sales@igniters.co.uk

SCALE: 1:1	PART NO: CA334	MATL: –
CONTRACT: –		
CLIENT: –		
END USER: –		
TITLE: J170E TORCH WITH GAS INJECTOR		
REV.	DATE	DESCRIPTION
D	16/4/18	ITEM 6 P/N REVISED. DCR 5851
C	17/10/05	CROSS CHANGED TO TEE. DCR 2228
B	27/9/05	DCR 1483
A	5/3/04	DCR 725
–	28/11/03	FIRST ISSUE. DCR 645
BY	CH'D	

**A1/IG/ 9742D**